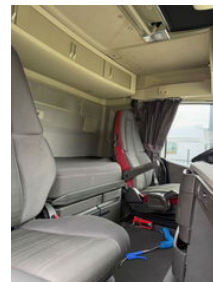


Volvo FH 500 !!! 3-2016

General features

Brand	Volvo
Model	FH
Subcategory	Cab over engine
Licence plate	11-BGZ-4
Odometer reading	985.000km
Construction year	2016
Date of first registration	23-03-2016
Color	Blue
Condition	Used
General condition	Very good
Fuel	Diesel
Emission class	Euro 6
Reference	fh 500 2016



Characteristics

Empty weight	8.296kg
Load capacity	12.704kg
GWV	21.000kg
Length	599cm
Width	254cm
Cabin	Sleeper cabin

Serial number

YV2RT40A8GB765007

Cylinder contents

12.777cc

Volvo FH 500 !!! 3-2016

Technical specifications

Number of axes	2
Axis configuration	4x2
Transmission	Automatic
Engine output	375kw

Accessories

-
- Anti-lock braking system
- Air conditioning
- Aluminium fuel tank
- Central locking
- Central lubrication
- Cruise control
- Twin fuel tank
- Electrically operated windows
- Low-noise
- Toolbox
- Refrigerator
- Air horn
- Air suspension
- Fog lights
- Parabolic suspension
- Radio/CD player
- Particulate filter
- Side skirts
- Sleeper cab
- Speed limiter
- Vehicle heater
- Heavy duty engine brake
- Spotlights
- Visor
-
- Electrically adjustable door mirrors
-
-