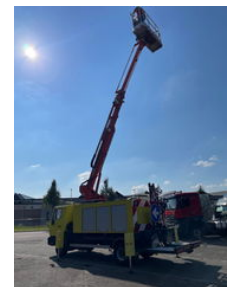
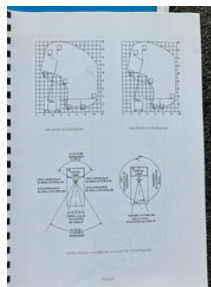


## MAN L2000 12.210 CUSTER T-200- 18

### General features

|                            |                   |
|----------------------------|-------------------|
| Brand                      | MAN               |
| Model                      | L2000             |
| Subcategory                | Mounted boom lift |
| Licence plate              | BP-TR-64          |
| Odometer reading           | 295.204km         |
| Construction year          | 2004              |
| Date of first registration | 08-12-2004        |
| Condition                  | Used              |
| General condition          | Good              |
| Fuel                       | Diesel            |
| Emission class             | Euro 3            |



### Characteristics

|               |         |
|---------------|---------|
| Empty weight  | 9.150kg |
| Load capacity | 2.840kg |

|                  |                   |
|------------------|-------------------|
| GWW              | 11.990kg          |
| Length           | 777cm             |
| Width            | 235cm             |
| Serial number    | WMAL71ZZ75Y140087 |
| Lifting capacity | 200kg             |

# MAN L2000 12.210 CUSTER T-200- 18

## Technical specifications

|                    |        |
|--------------------|--------|
| Number of axes     | 2      |
| Axis configuration | 4x2    |
| Transmission       | Manual |
| Engine output      | 162kw  |

## Accessories